

SunSystems Add-ons from Sapphire – An Overview



ABOUT SAPPHERE

Sapphire Systems plc is the Global No.1 partner for Infor FMS SunSystems, No.1 SAP Business One Reseller in the EMEA region and 2009 Partner of the Year for Professional Advantage. Sapphire has built a team of technical and services personnel who have led some 2,500 system implementations - from single-user financials systems to large, multi-national applications.

Sapphire has global rollout capabilities that are available across all continents, and that are backed by a large team of SunSystems specialists. With consistent, double digit revenue growth over the last several years, Sapphire joined the ranks of the Deloitte Fast 500 EMEA Technology Providers in 2005.

Headquartered in London with offices in Manchester, Edinburgh and the Isle of Man in the UK, as well as New York & Los Angeles – USA, the group today provides solutions, services and support to over 600 companies worldwide.

Need More Information?

+44 (0)20 7648 2000
info@sapphiresystems.com
www.sapphiresystems.com

Get the most out of your SunSystems Solution with Sapphire

So that you get the most out of your SunSystems solution, Sapphire's team of highly skilled experts have created a series of 'Add-on' programmes designed to heighten the efficiency of your software, reduce work load and generally make your life easier.

All of Sapphire's 'Add-on' facilities are extremely user friendly and require minimal training. And with full integration into your current software set-up and installation in a matter of days, you could be reaping the benefits sooner than you think. Contact us now to see how one or all of these tools can free up valuable resource; ultimately saving you time and money.

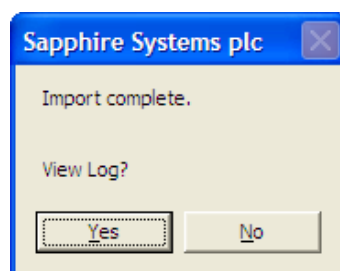
SunSystems Add-ons from Sapphire:

Mass Import Utility for Currency Rates

Available for all versions of SunSystems.

Where users need to maintain a large number of currency rates and/or a large number of business units or databases, loading currency rates (a particularly daily ones) is an arduous task. This tool takes a file downloaded from the web and loads it into your business unit(s) with a minimum number of clicks. As the same data is loaded into each business unit, it also guarantees consistency.

Select your business units:



Select the import file and click on OK:

In the unlikely event of errors, they will be detailed in the log file.

Need More Information?

+44 (0)20 7648 2000
 info@sapphiresystems.com
 www.sapphiresystems.com



"In comparison to other systems we felt that SunSystems offered superior reporting and would provide more information on our data. It was also able to cope with the requirements we have for working in multiple currencies and is more user-friendly."

JAC Travel

"I was particularly impressed by Sapphire's knowledge and expertise in implementing SunSystems into new media operations, and was eager to talk further with them about our specific requirements."

Improveline.com

"SunSystems is a tried and tested product. Bearing in mind the timeframe we had, it was an easy choice to make. One of SunSystems' key features is its flexibility, so we are able to put our own structure in place. What's more, we found Sapphire's help and advice whilst we were looking for the right business solution was very good."

Serica Energy

Business Unit Synchronisation Tool & Quick Period Updater

Available for all versions of SunSystems 5.2 and above.

Again for users with multiple business units, but in this instance for users whose business units share a common chart of accounts and analysis dimensions.

It works by reading a master business unit, and copying any changes or additions into other business units.

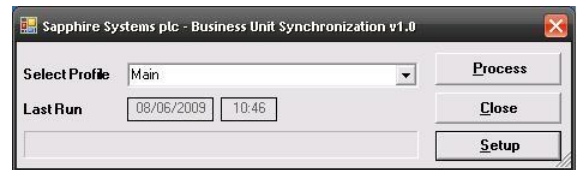
It will update accounts, suppliers, customers, analysis, journal types, currencies, and many other sets of static data.

It can also update the current posting period and open period range in all of your business units saving valuable time on this monthly task.

It is also highly configurable. For instance where certain ranges of accounts need to be disabled or excluded from a destination business unit the tool can be configured to handle this.

The tool can save you a significant amount of maintenance time, and provides a means of avoiding user input errors when copying and ensuring consistency. It can also be run as a scheduled, automated task, for instance overnight, to save extra time.

Multiple profiles can be created to deal with different types of static data and/or subsets of your business units. Within each profile individual business units, data types and even individual data items can be enabled/disabled



Setup - Business Unit (PKP US)

Bus Unit	RunOrder	Component	Data Obj	Method	Key/XML	Last Run
PK1	5	PaymentTermsGroups	PaymentTermsGroups	CreateOrAmend		230420091448
PK1	10	Address	Address	BulkCreateOrAmend		200320091610
PK1	20	Accounts	Accounts	BulkCreateOrAmend	<AccountCode/>	120520091834
PK1	25	CurrencyCodes	ConversionCodes	CreateOrAmend		200320091610
PK1	30	AnalysisCodes	AnalysisCodes	BulkCreateOrAmend	<AnalysisCode/><An...	230420091448
PK1	30	CurrencyDailyRates	DailyConversionRate	CreateOrAmend		010420091619
PK1	40	CurrencyPeriodRates	PeriodConversionRate	CreateOrAmend		200320091611
PK1	60	Supplier	Supplier	BulkCreateOrAmend		200319991503
PK1	70	Customer	Customer	CreateOrAmend		200319991503

Setup - Profile

Select Profile: Main

Last Run On: 08/06/2009 10:46

SunVersion: 5.2

Master Bus. Unit: PKP

SSC Host: DEV07

SSC User: AS

SSC Password: []

SSC Port: 55000

SSC Timeout (sec): 120000

Code	Description	Enabled	Update LES
PK1	PKP US	<input checked="" type="checkbox"/>	<input checked="" type="checkbox"/>
PK2	PK2 TEST	<input type="checkbox"/>	<input type="checkbox"/>
PK3	PKP UK	<input checked="" type="checkbox"/>	<input checked="" type="checkbox"/>
PK4	PKP Germany	<input checked="" type="checkbox"/>	<input type="checkbox"/>
PK5	PKP France	<input type="checkbox"/>	<input type="checkbox"/>

"SunSystems delivers pretty much everything we could want from an accounting package and the Vision reporting tool extremely flexible. Since implementation we have benefited from significantly improved reporting – previously there was a reliance on use of Microsoft Excel." The team at 19 Entertainment remain pleased with the decision to work."

19 Entertainment



SUNSYSTEMS

INFORTM
channel partner

Journal Reversal Tool

Designed for users of SunSystems versions 5.3 and below, this simple tool enables the user to reverse journals; avoiding the use of Ledger Export and/or Vision and freeing up valuable time. Can partially reverse journals, post to alternative periods, and stamp a different description on the reversed transactions.

Users generally find this more user friendly than other available options, and the resulting reversing journal holds clearer information on its purpose.

The number of mouse clicks involved is minimal compared to other reversal methods:

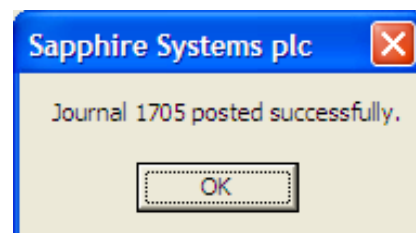
Select your journal(s):

#	Account	Period	Date	Type	Jnl. No.	Line	Ref.	Description	Amount	D.	Cu
<input type="checkbox"/>	64045	1999001	14/01/1999	SIF	4	1	SIF 1000	Software Sales Foreign	-34918.200	D	PLI
<input type="checkbox"/>	11000	1999001	14/01/1999	SIF	4	2	SIF 1000	Software Sales Foreign	34918.200	C	PLI
<input type="checkbox"/>	64045	1999001	14/01/1999	SIF	4	3	SIF 1001	Software Sales Foreign	-29250.000	D	PLI
<input type="checkbox"/>	11000	1999001	14/01/1999	SIF	4	4	SIF 1001	Software Sales Foreign	29250.000	C	PLI
<input type="checkbox"/>	64045	1999001	14/01/1999	SIF	4	5	SIF 1002	Software Sales Foreign	-44596.800	D	PLI
<input type="checkbox"/>	11000	1999001	14/01/1999	SIF	4	6	SIF 1002	Software Sales Foreign	44596.800	C	PLI
<input type="checkbox"/>	64045	1999001	14/01/1999	SIF	4	7	SIF 1003	Software Sales Foreign	-41461.200	D	PLI
<input type="checkbox"/>	11000	1999001	14/01/1999	SIF	4	8	SIF 1003	Software Sales Foreign	41461.200	C	PLI
<input type="checkbox"/>	64045	1999001	14/01/1999	SIF	4	9	SIF 1004	Software Sales Foreign	-34281.000	D	PLI
<input type="checkbox"/>	11000	1999001	14/01/1999	SIF	4	10	SIF 1004	Software Sales Foreign	34281.000	C	PLI

Select

from the journal(s) and enter a meaningful description:

Click on post.



Need More Information?

London

+44 (0)20 7648 2000

New York

+1 (212) 541 2406

Los Angeles

+1 (310) 231 8731

info@sapphiresystems.com

www.sapphiresystems.com

"Our working relationship with Sapphire is excellent. We are kept well informed of software and industry developments through events and newsletters, and find the support of Sapphire's consultancy team invaluable in ensuring the successful day-to-day running of our financial systems ."

St. Paul at Lloyd's



Interfaces with on line banking software/secure cheque printing services

Available for all versions of SunSystems.

SunSystems's standard bank payment functionality outputs a file suited to uploading into BACS software.

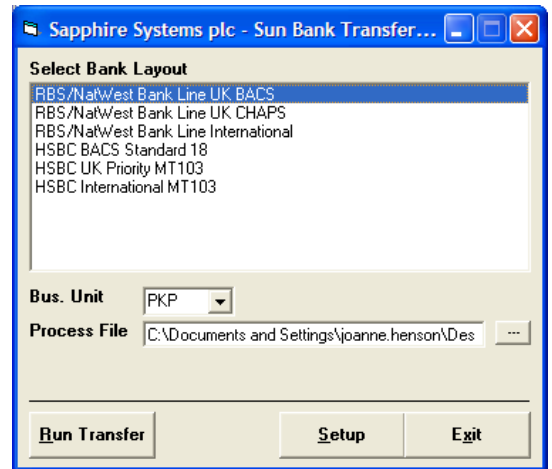
Where users have online banking systems instead, they may wish to upload the payment file into their own banking software, which is where this tool comes in.

The tool picks up the file which SunSystems has output, and reformats it for import into your banking system.

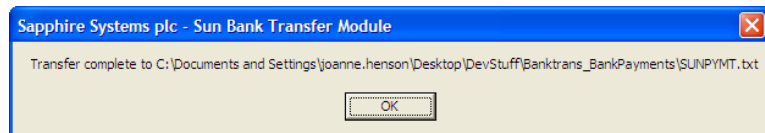
Select the appropriate bank and payment type (we have a large number of payment templates for all the main banks):

Click on Run Transfer:

The file is now available for upload into your banking software.



This avoids the need to key payments into your banking system manually, thereby saving time and ensuring accuracy.



Web front end for journal entry

An easy to use facility designed for occasional users who only enter a small number of journals per month. This avoids the need for a full SunSystemsSystems user licence, simplifies access and ultimately saves your company money.

For more information about any of our SunSystems Add-ons please contact our Product Advisory Team on +44 (0)20 7648 2000 or speak with your Account Manager directly.

SUNSYSTEMS

INFOR™
channel partner

Need More Information?

London

+44 (0)20 7648 2000

New York

+1 (212) 541 2406

Los Angeles

+1 (310) 231 8731

info@sapphiresystems.com

www.sapphiresystems.com